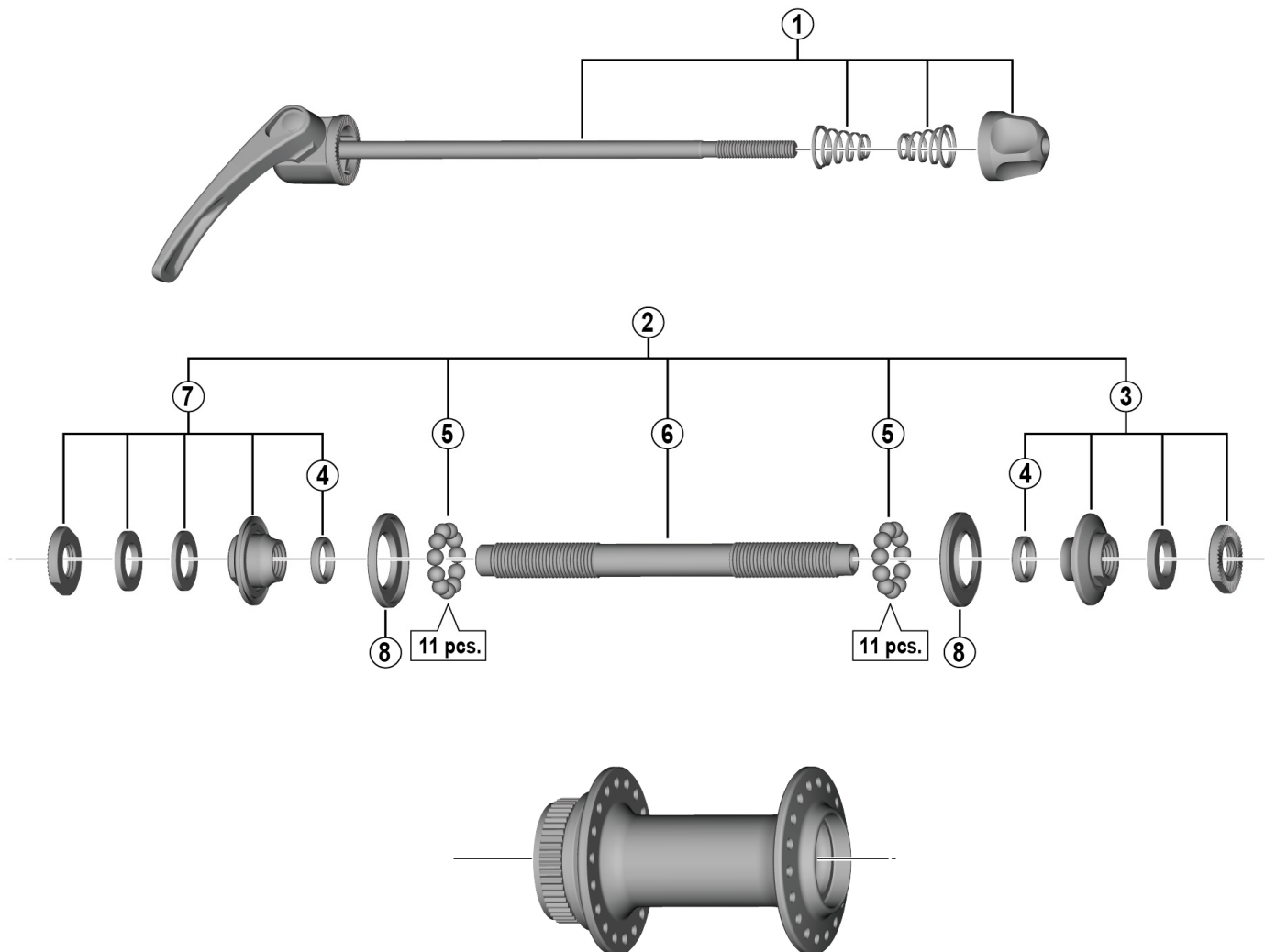


# DEORE Front Hub

## HB-M6000 For Disc Brake



• Over Lock Nut Dimension: 100 mm (3-15/16")

ITEM NO.	SHIMANO CODE NO.	DESCRIPTION	INTERCHANGEABILITY		
1	Y4D298060	Complete Quick Release 133 mm (5-1/4")	A		
2	Y2TS98010	Complete Hub Axle 108 mm (4-1/4")	A		
3	Y2TS98020	Right Hand Lock Nut Unit	A		
4	Y2T804000	O-Ring	A		
5	Y4BB98030	Steel Ball (3/16") 22 pcs.	A		
6	Y21S02000	Hub Axle M10 x 108 mm (4-1/4")	A		
7	Y2TS98030	Left Hand Lock Nut Unit	A		
8	Y2TA06000	Seal Ring	A		

A: Same parts.

B: Parts are usable, but differ in materials, appearance, finish, size, etc.

Absence of mark indicates non-interchangeability.

Specifications are subject to change without notice.

Mar.-2017-4193

© Shimano Inc. I

# SHIMANO