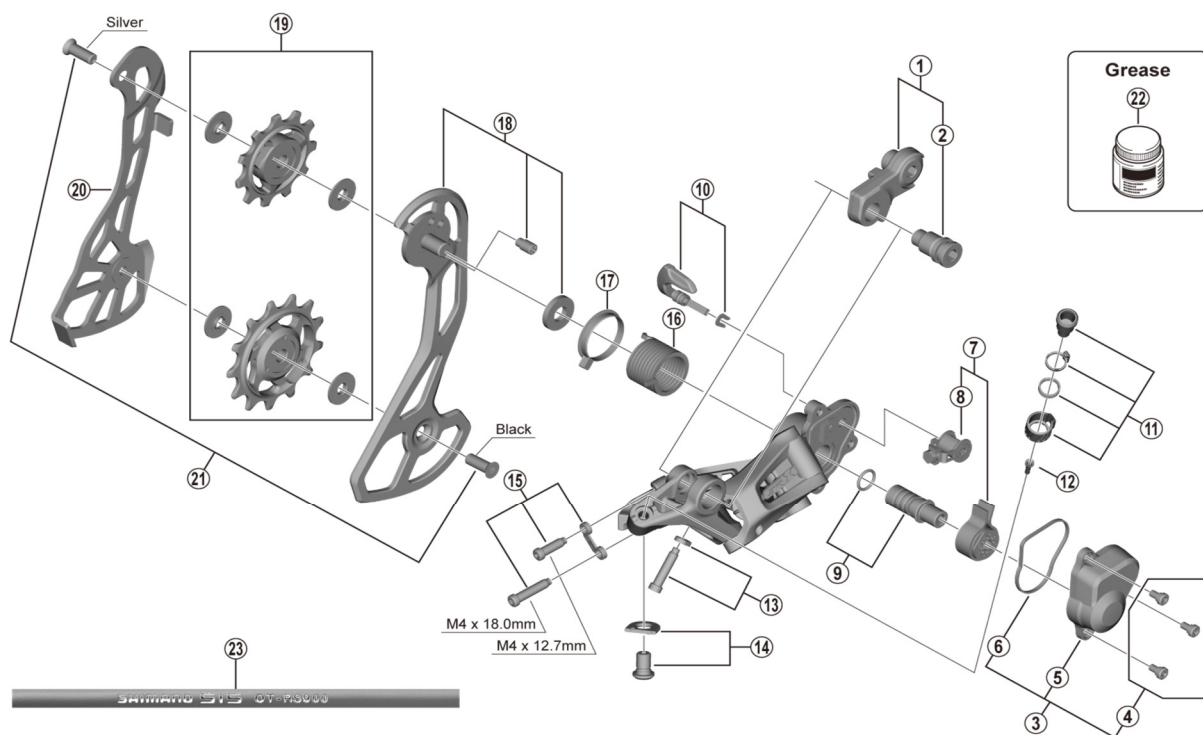


GRX Rear Derailleur RD-RX810 (11-speed)



ITEM NO.	SHIMANO CODE NO.	DESCRIPTION
1	Y3E998020	Bracket Axle Unit (for normal type)
2	Y3E958000	B-Axle 2 (for Direct Mount type)
3	Y3GE98020	P-Cover Unit
4	Y5Y198070	P-Cover Bolt Set (3 pcs.)
5	Y3GE41000	P-Cover
6	Y3FK41000	P-Cover Packing
7	Y3GE98060	Stabilizer Unit
8	Y5Y198120	Cam Unit
9	Y5PV98060	P-Axle & O-Ring
10	Y3GE98030	Switch Lever Unit & Fixing Plate
11	Y3E998030	Cable Adjusting Bolt Unit
12	Y5PV48000	Cover with tongue
13	Y3E998040	End Adjusting Bolt (M4 x 18) & Plate
14	Y3E998050	Cable Fixing Bolt & Plate
15	Y3E998060	Stroke Adjusting Bolts & Plate
16	Y5PV17000	P-Tension Spring
17	Y5PV24000	P-Seal Ring
18	Y3GE98040	Outer Plate Assembly
19	Y3GE98010	Tension & Guide Pulley Set
20	Y3GE06000	Inner Plate
21	Y3GE98050	Tension Pulley Bolt (M5 x 12.45/Black) & Guide Pulley Bolt (M5 x 12.45/Silver)
22	Y04121000	New Grease for Stabilizer (Net. 50g)
23	Y0BM98011	OT-RS900 (Black) 240 mm x 10 pcs. (with Sealed Outer Cap & Outer Cap with Long Tongue)
	Y0BM98021	OT-RS900 (White) 240 mm x 10 pcs. (with Sealed Outer Cap & Outer Cap with Long Tongue)
	Y0BM98031	OT-RS900 (Red) 240 mm x 10 pcs. (with Sealed Outer Cap & Outer Cap with Long Tongue)
	Y0BM98041	OT-RS900 (High-tech gray) 240 mm x 10 pcs. (with Sealed Outer Cap & Outer Cap with Long Tongue)

May-2019-4589
© Shimano Inc. I

Specifications are subject to change without notice.

SHIMANO